

PK2

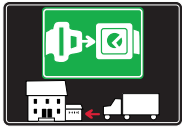


SHELF
SUPPORTS



SYMBOLS AND FINISHES LEGEND

SYMBOLS



= SHELF SAFELY LOCKED DURING TRANSPORTATION AND AT HOME.



= ANTI-TURNOVER LOCKING SYSTEM



= NORMS / PATENTS



= PHILLIPS / POZIDRIV



= NEWTON



= PART.NO



= HEXAGONAL SOCKET



= FRICTION



= PCS. PER PACKAGE



= BLADE SLOT



= AUTOMATIC



= COMBI SLOT



= DROP DOWN



= CAPACITY LOADING



= COUNTERSUNK HEAD



= WOOD / GLASS THICKNESS



= PAN HEAD



= STANDARD HINGE



= HOLE DIAMETER



= FLANGE HEAD



= KIMANA HINGE



= DIAMETER



= FLAT HEAD



= FLAP HINGE



= LENGTH



= TRILOBULAR SCREW



= WITH SPRING



= HEIGHT



= SELF-TAPPING SCREW



= WITHOUT SPRING



= RIGHT VERSION



= EURO THREAD



= REVERSED SPRING



= LEFT VERSION



= METRIC THREAD



= SETTING CODE



= PRE-INSERTED SCREW



= FOR ROUND TUBE



= PCS. PER PAD



= PRE-INSERTED SCREW AND SPREADING BUSH



= FOR OVAL TUBE



= CUT ON REQUEST



= WITH BUFFER



= SELF ADHESIVE



= WITH MAGNET



= WITH FLANGE

NOTE: Printing errors and omissions may exist despite our best efforts to ensure accuracy. We reserve the right to alter specifications without notice.

MATERIALS

ZA = Zinc Alloy	ST = Steel	HSS = High Speed Steel	BR = Brass	ABS = Acrylonitrile Butadiene Styrene
ZAnk = Nickel-plated Zinc Alloy	STzk = Zinc-plated Steel	AL = Aluminium	WD = Wood	EVA = Ethylene Vinyl Acetate

EP = **ENGINEERING PLASTIC**
 + **EP** = other engineering plastic available on request

SR = **SOFT RUBBER**
 + **SR** = other soft rubber available on request

EPn = Natural Engineering Plastic	EPc = Clear Engineering Plastic	SRn = Natural Soft Rubber
EPw = White Engineering Plastic	EPg = Grey Engineering Plastic	SRw = White Soft Rubber
EPwg = Water Green Engineering Plastic		SRb = Black Soft Rubber



FINISHES



= OTHER FINISHES AVAILABLE ON REQUEST

AA	Natural	JB	Bright Aluminium	QB	Walnut
AB	White	JC	Aluminium - Chrome	RO	Red
AC	Opal White	JD	Matt Aluminium	UZ	T -Met
AE	White 9010	JE	Satin-finished Aluminium	WA	Bronzed
AK	Champagne	JF	Aluminium - Brass	WI	Burnished
AL	Ivory	JG	Aluminium 5	XD	Satin-finished Steel
EA	Black	JL	Aluminium PE 11	YA	Nickel-plated
EB	Glossy Black	JM	Aluminium RAL 9006	YB	Bright Nickel-plated
EC	Matt Black	KA	Chrome	YC	Matt Nickel-plated
EE	Anthracite	KB	Bright Chrome	YD	Satin-finished Nickel-plated
FU	Gunmetal	KC	Matt Chrome	ZA	Zinc alloy
GR	Raw	MA	Brown	ZN	Zinc-plated
HA	Brass-Plated	MB	Light Brown 1	ZQ	Bright Gold
HH	Tropicalized	NN	Metallic Beige	ZY	Titanium
HL	Raw Brass	NO	Beige	ZZ	Clear
IA	Grey	OA	Oak	00	Insignificant finish
IB	Metallic Grey	OZ	Ash		
IF	Middle Grey	PA	Light Ash		
IJ	Light Grey	PZ	Beech		
IL	Grey 20	QA	Maple		



PK2

PK2 is the new concept in wood shelf supports, to be slotted into the panel by making face borings.

It allows to join together any side and shelf, including bottom and top, without using any further connecting fitting. The panel has to be pushed downwards onto the side brackets, which can be screwed into any position required. The side bracket slots into the socket of the shelf supports and a click locks the panel in position.

To provide the furniture with structural fastening, the version with mini fix within the plastic shelf support is required. By turning the mini fix placed inside the shelf support 90° anticlockwise from the bottom, the shelf and top panel collide with the sides, providing a structural fastening.

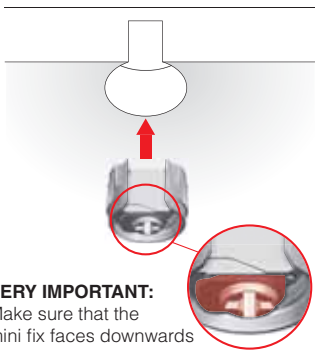
An optional through hole Ø 8mm allows you to fix also the bottom panel from the top by turning the mini fix 90° anticlockwise.



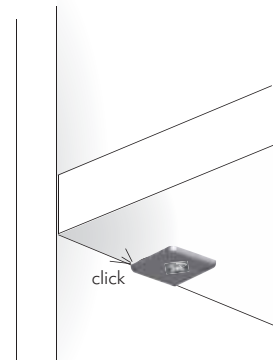
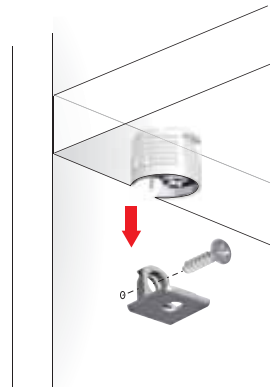
16 mm min.

UNI EN 14749/05 and UNI 8603/05

INSTALLATION AND ASSEMBLING

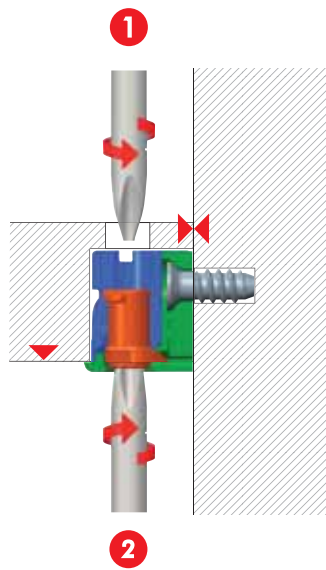


VERY IMPORTANT:
Make sure that the mini fix faces downwards



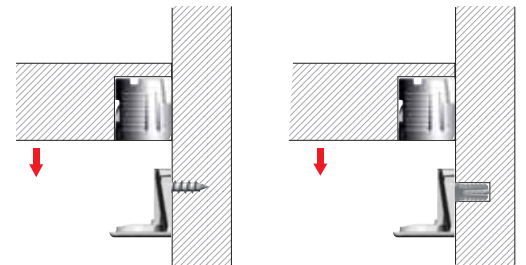
STRUCTURAL FASTENING WITH CROSS PZ2 SCREWDRIVER:

90° turning from the upper side, for the furniture floor.



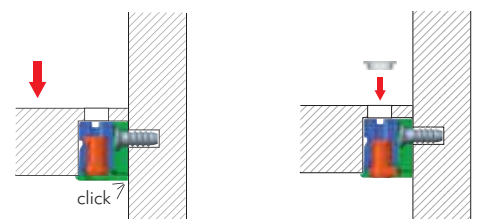
90° turning from the lower side, for the shelves and for the top.

Assembling with pre-inserted spreading bush and screw to avoid hole damaging for shelf repositioning.



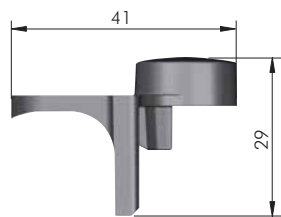
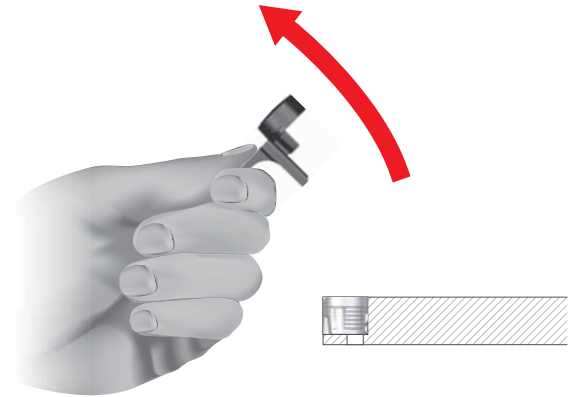
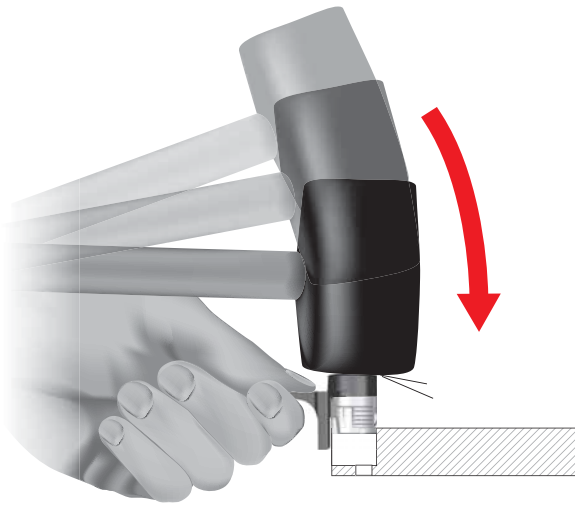
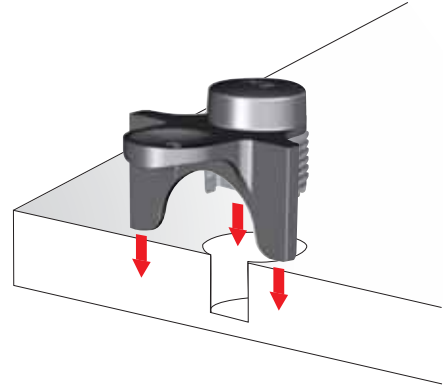
LOCKING DETAIL:

After turning the minifix.





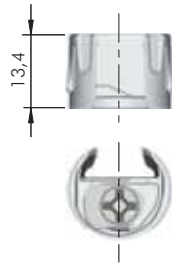
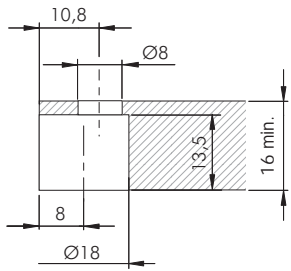
PK2 TEMPLATE



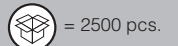
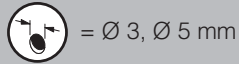
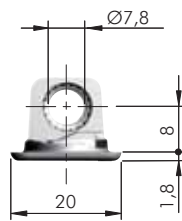
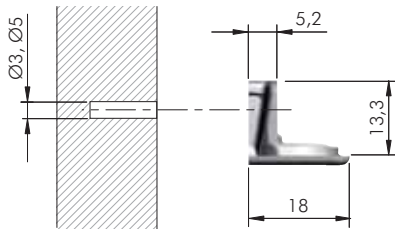
EPb	= on request
1145001000	



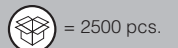
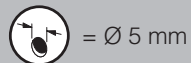
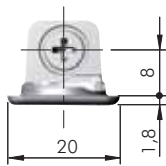
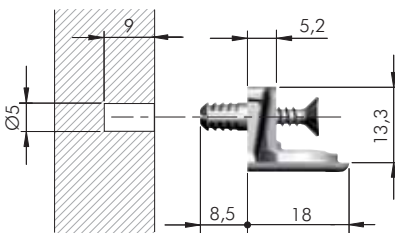
PK2  16 mm



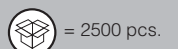
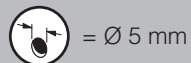
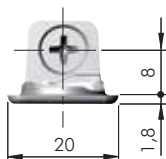
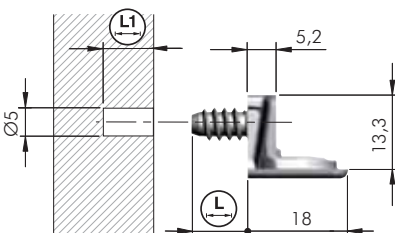
11401010J



11402010YA



11402020YA



11402090YA

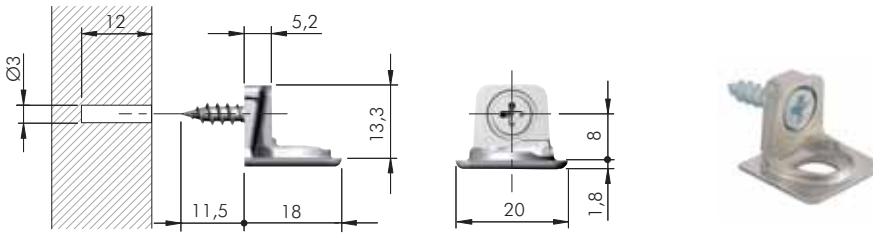
8,8

9,5

11402030YA

10

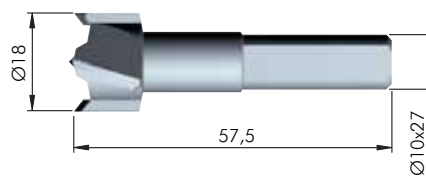
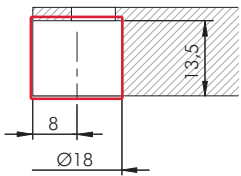
10,5



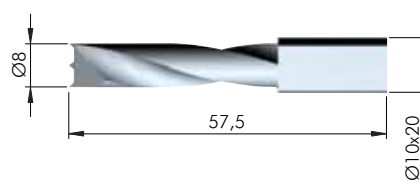
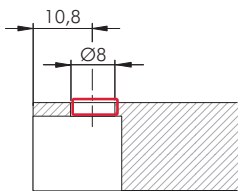
= Ø 3 mm +
 = PZ2
 = 2500 pcs.

123
 11402050YA

DRILL BIT FOR PK2 **16 mm**

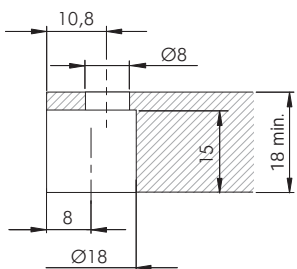


HSS = on request
 123
 1145201000



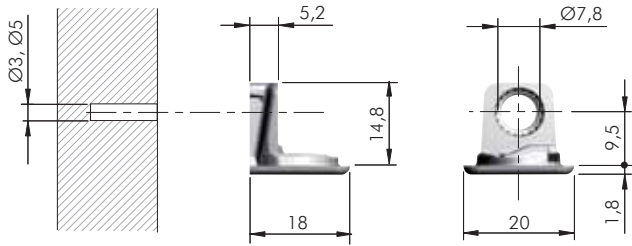
HSS = on request
 123
 1145202000

PK2 **18 - 19 mm**



= PZ2
 = 2500 pcs.

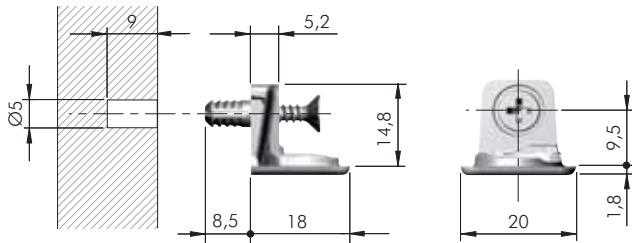
123
 11401030IJ



= Ø 3, Ø 5 mm +

= 2500 pcs.

11403010YA

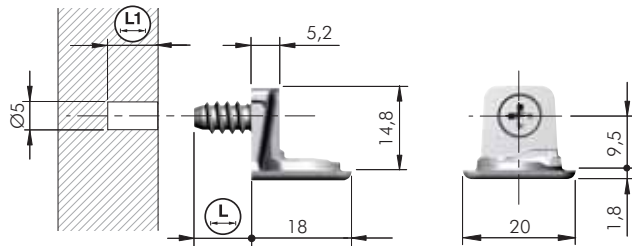


= Ø 5 mm +

= PZ2

= 2500 pcs.

11403020YA

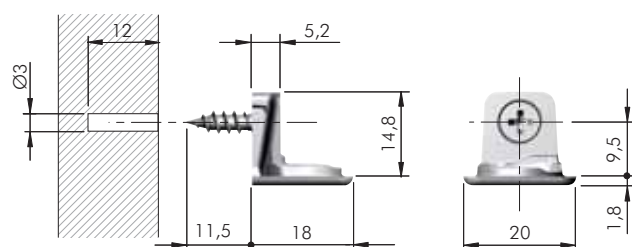


= Ø 5 mm +

= PZ2

= 2500 pcs.

11403100YA	8,8	9,5
11403030YA	10	10,5



= Ø 3 mm +

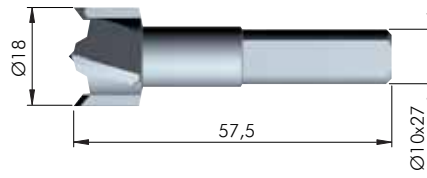
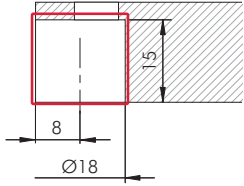
= PZ2


= 2500 pcs.



11403050YA

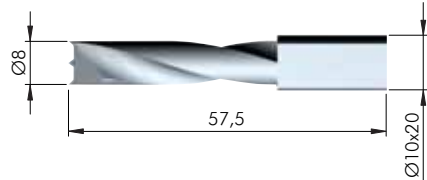
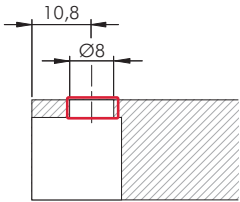



DRILL BIT FOR PK2  **18 - 19 mm**





HSS  = on request

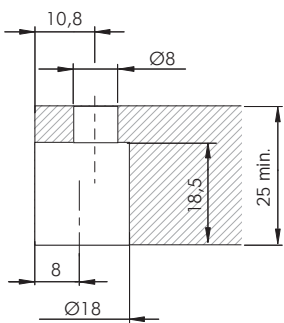
 
1145201000





HSS  = on request



 
1145202000

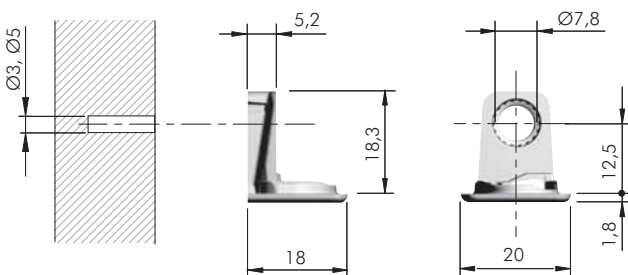
PK2  **25 mm**







 = PZ2



ZA EP  = 2000 pcs.

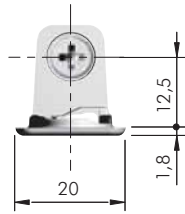
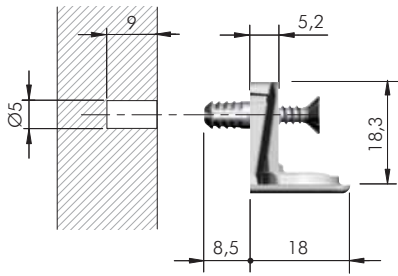
 
11401050IJ



 = Ø 3, Ø 5 mm  + 

ZA  = 2500 pcs.

 
11404010YA

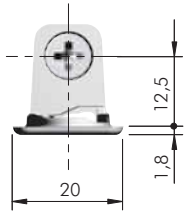
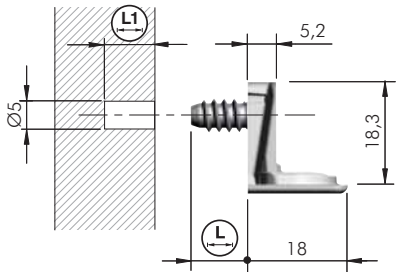


= Ø 5 mm +

= PZ2

ZA ST EP = 2000 pcs.

11404020YA

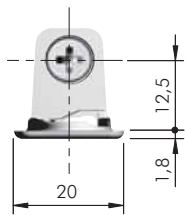
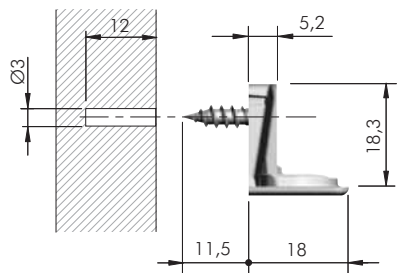


= Ø 5 mm +

= PZ2

ZA ST = 2000 pcs.

11404100YA	8,8	9,5
11404030YA	10	10,5



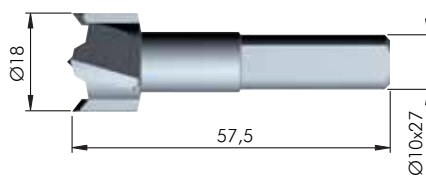
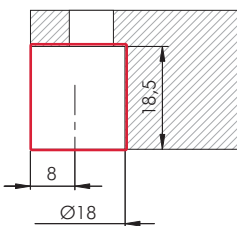
= Ø 3 mm +

= PZ2

ZA ST = 2000 pcs.

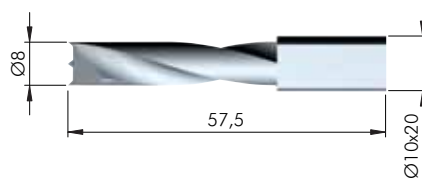
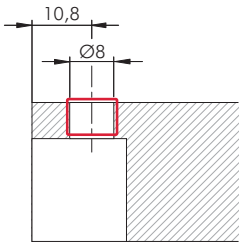
11404050YA

DRILL BIT FOR PK2 25 mm



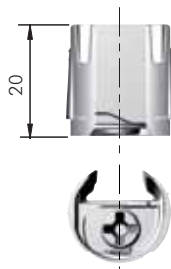
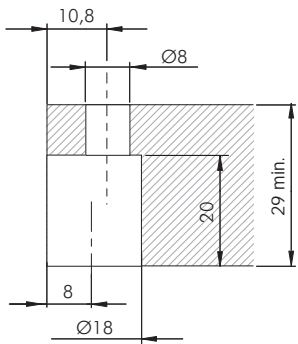
ST = on request

1145201000

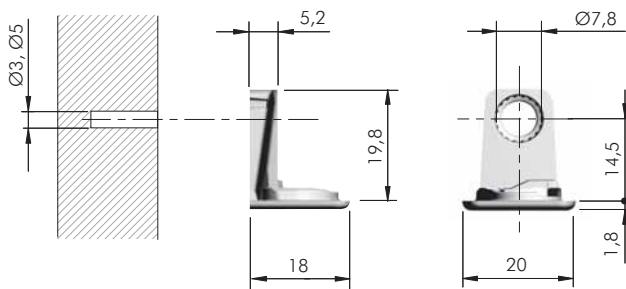


ST	= on request
1145202000	

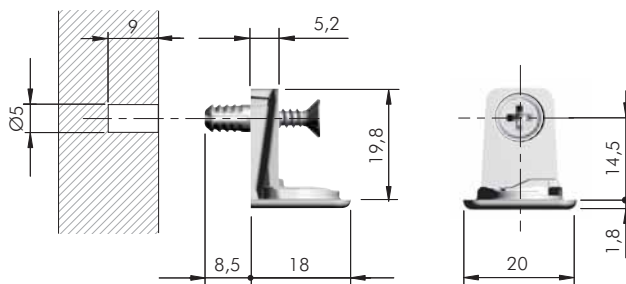
PK2 **29 mm**



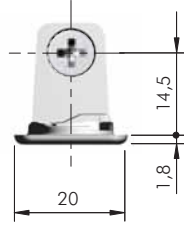
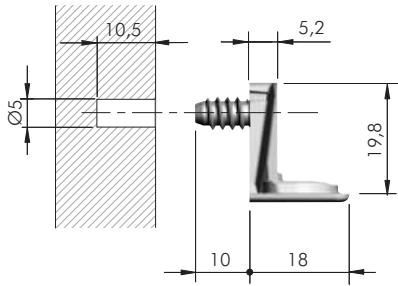
= PZ2	= 2000 pcs.
ZA EP	
11401070IJ	



= Ø 3, Ø 5 mm	= 2000 pcs.
ZA	
11405010YA	



= Ø 5 mm	= 2000 pcs.
= PZ2	
ZA ST EP	
11405020YA	

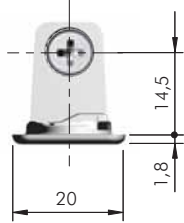
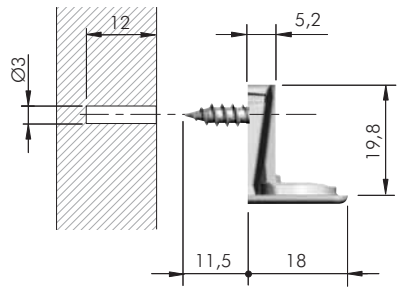


= Ø 5 mm +

= PZ2

ZA ST = 2000 pcs.

11405030YA



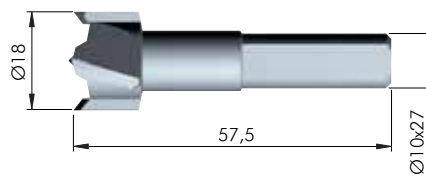
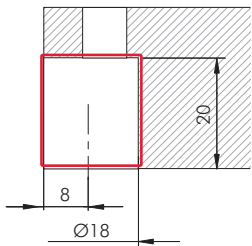
= Ø 3 mm +

= PZ2

ZA ST = 2000 pcs.

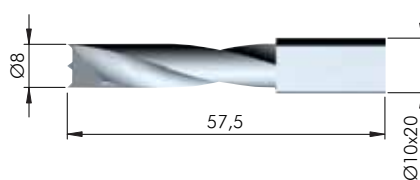
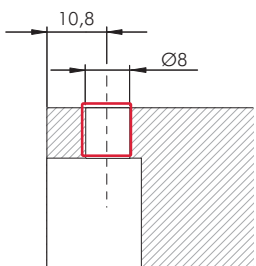
11405050YA

DRILL BIT FOR PK2 29 mm



ST = on request

1145201000

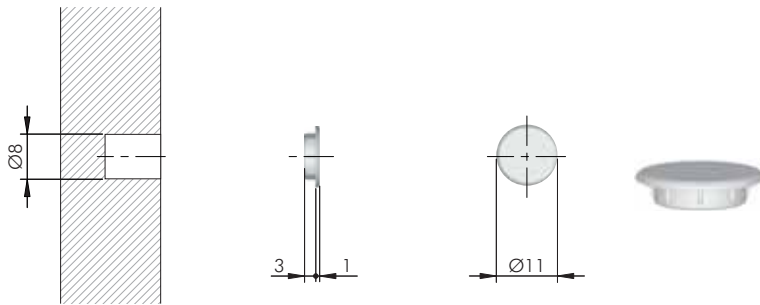


ST = on request

1145202000



PK2 ACCESSORY

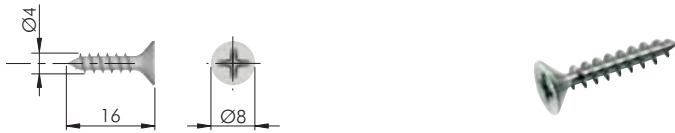


= Ø 8 mm
 +

EP
 = 5000 pcs.

23002010AB

PK2 FIXING ACCESSORIES

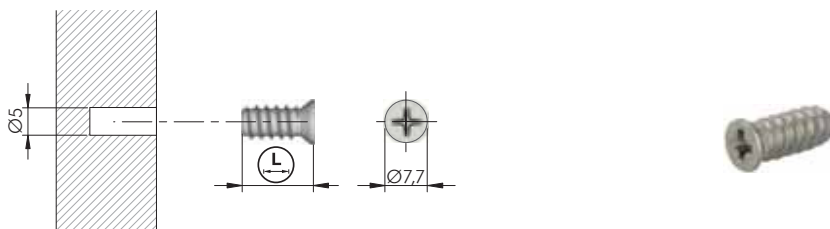


= Ø 3 mm

= PZ2

ST
 = 5000 pcs.

60101570ZN

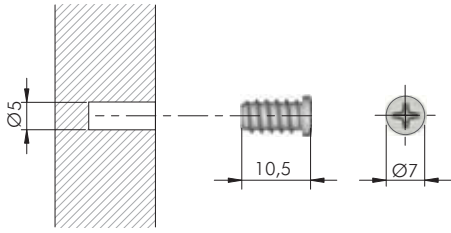


= Ø 5 mm
 +

= PZ2

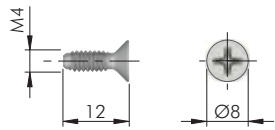
ST

60502010ZN	10	9000
60501050YA	12,7	5000
60502020ZN	13	5000
60502030ZN	15	5000



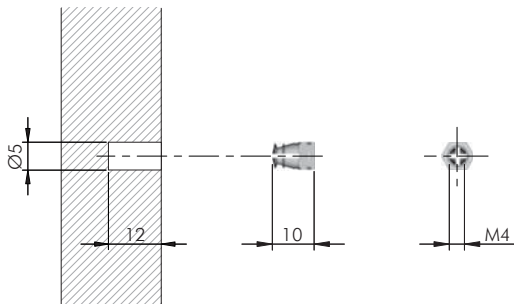
= $\varnothing 5$ mm +
 = PZ2
 = 5000 pcs.

60507010YA



= M4 = PZ2
 = 2000 pcs.

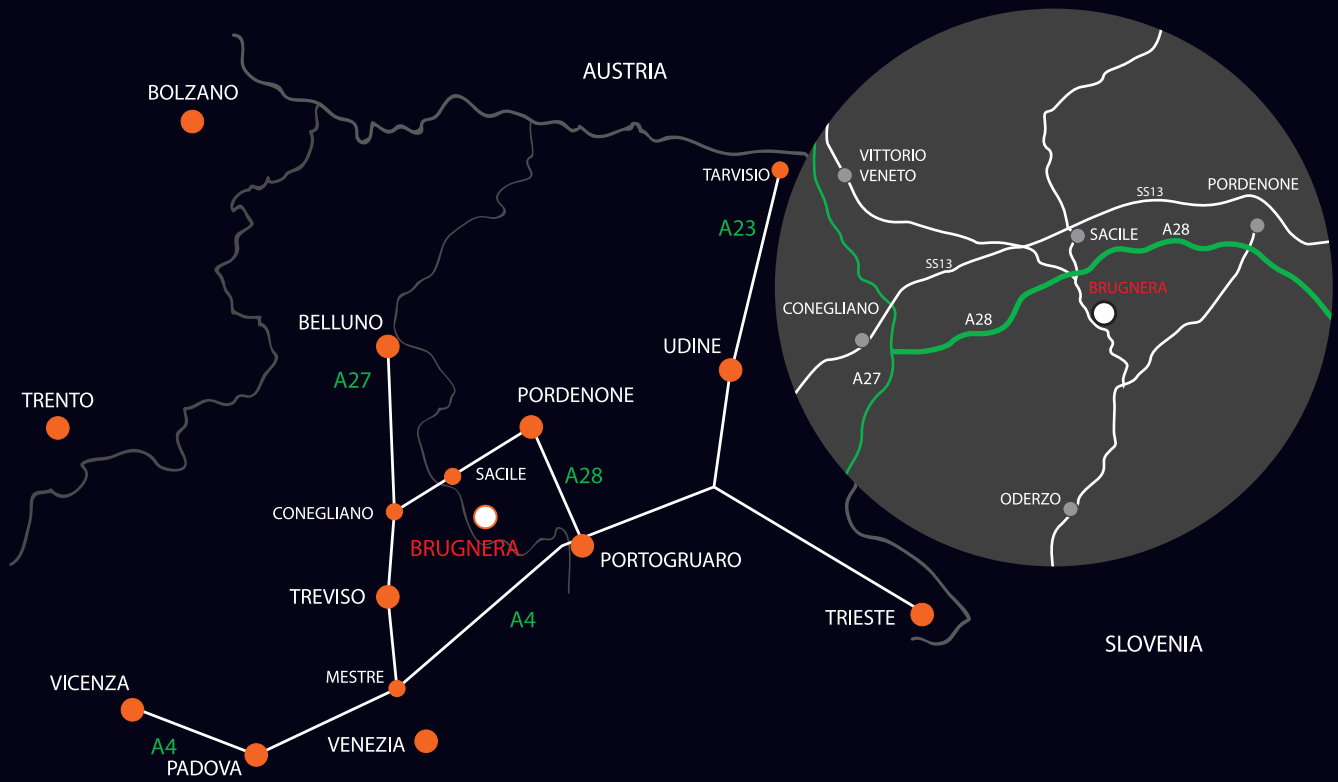
60305040ZN



= $\varnothing 5$ mm = M4
 = 20.000 pcs.

20502021HL





www.italianaferramenta.com