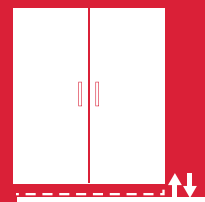
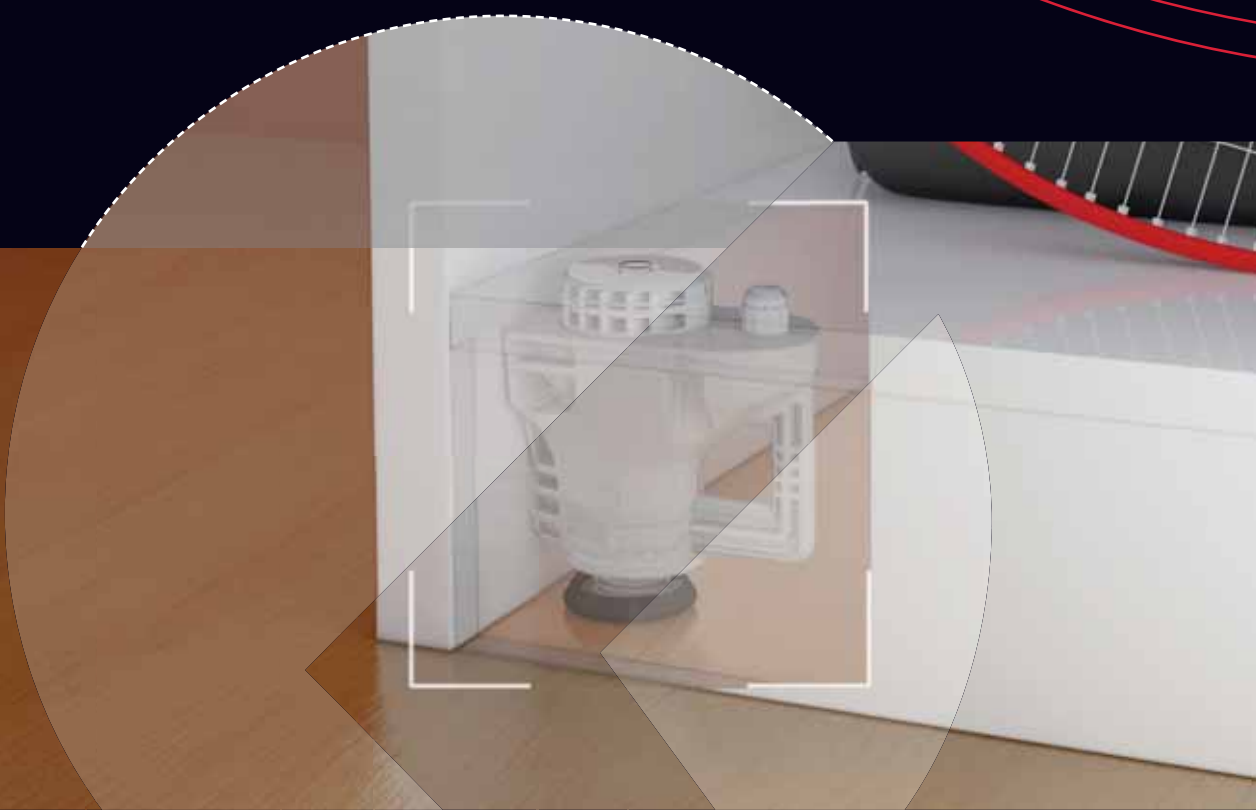


ATACAMA J



LEVELLERS





# SYMBOLS AND FINISHES LEGEND

## SYMBOLS



= SHELF SAFELY LOCKED DURING TRANSPORTATION AND AT HOME.



= ANTI-TURNOVER LOCKING SYSTEM



= NORMS / PATENTS



= PHILLIPS / POZIDRIV



= NEWTON



= PART.NO



= HEXAGONAL SOCKET



= FRICTION



= PCS. PER PACKAGE



= BLADE SLOT



= AUTOMATIC



= COMBI SLOT



= DROP DOWN



= CAPACITY LOADING



= COUNTERSUNK HEAD



= WOOD / GLASS THICKNESS



= PAN HEAD



= STANDARD HINGE



= HOLE DIAMETER



= FLANGE HEAD



= KIMANA HINGE



= DIAMETER



= FLAT HEAD



= FLAP HINGE



= LENGTH



= TRILOBULAR SCREW



= WITH SPRING



= HEIGHT



= SELF-TAPPING SCREW



= WITHOUT SPRING



= RIGHT VERSION



= EURO THREAD



= REVERSED SPRING



= LEFT VERSION



= METRIC THREAD



= SETTING CODE



= PRE-INSERTED SCREW



= FOR ROUND TUBE



= PCS. PER PAD



= PRE-INSERTED SCREW AND SPREADING BUSH



= FOR OVAL TUBE



= CUT ON REQUEST



= WITH BUFFER



= SELF ADHESIVE



= WITH MAGNET



= WITH FLANGE

NOTE: Printing errors and omissions may exist despite our best efforts to ensure accuracy. We reserve the right to alter specifications without notice.

## MATERIALS

<b>ZA</b> = Zinc Alloy	<b>ST</b> = Steel	<b>HSS</b> = High Speed Steel	<b>BR</b> = Brass	<b>ABS</b> = Acrylonitrile Butadiene Styrene
<b>ZAnk</b> = Nickel-plated Zinc Alloy	<b>STzk</b> = Zinc-plated Steel	<b>AL</b> = Aluminium	<b>WD</b> = Wood	<b>EVA</b> = Ethylene Vinyl Acetate

**EP** = **ENGINEERING PLASTIC**

+ **EP** = other engineering plastic available on request

**SR** = **SOFT RUBBER**

+ **SR** = other soft rubber available on request

**EPn** = Natural Engineering Plastic

**EPc** = Clear Engineering Plastic

**SRn** = Natural Soft Rubber

**EPw** = White Engineering Plastic

**EPg** = Grey Engineering Plastic

**SRw** = White Soft Rubber

**EPwg** = Water Green Engineering Plastic

**SRb** = Black Soft Rubber



## FINISHES



= OTHER FINISHES AVAILABLE ON REQUEST

AA	Natural	JB	Bright Aluminium	QB	Walnut
AB	White	JC	Aluminium - Chrome	RO	Red
AC	Opal White	JD	Matt Aluminium	UZ	T -Met
AE	White 9010	JE	Satin-finished Aluminium	WA	Bronzed
AK	Champagne	JF	Aluminium - Brass	WI	Burnished
AL	Ivory	JG	Aluminium 5	XD	Satin-finished Steel
EA	Black	JL	Aluminium PE 11	YA	Nickel-plated
EB	Glossy Black	JM	Aluminium RAL 9006	YB	Bright Nickel-plated
EC	Matt Black	KA	Chrome	YC	Matt Nickel-plated
EE	Anthracite	KB	Bright Chrome	YD	Satin-finished Nickel-plated
FU	Gunmetal	KC	Matt Chrome	ZA	Zinc alloy
GR	Raw	MA	Brown	ZN	Zinc-plated
HA	Brass-Plated	MB	Light Brown 1	ZQ	Bright Gold
HH	Tropicalized	NN	Metallic Beige	ZY	Titanium
HL	Raw Brass	NO	Beige	ZZ	Clear
IA	Grey	OA	Oak	00	Insignificant finish
IB	Metallic Grey	OZ	Ash		
IF	Middle Grey	PA	Light Ash		
IJ	Light Grey	PZ	Beech		
IL	Grey 20	QA	Maple		



## ATACAMA J

**ATACAMA J** is the new leveller to align heavy duty wardrobes, bookcases and modular furniture with a connecting system built into. Suitable for 60mm plinths. It is fixed on the furniture bottom through two housings, in order to provide an easier and more stable installation.

The **ATACAMA J** installation is very easy thanks to a M6 pin that can be screwed into an insert nut inserted in the furniture side. A lateral pin slots into the furniture side to achieve a structural connection, as well as an equal load distribution over the furniture side and base. Finally, two screws secure **ATACAMA J** to the furniture bottom. By using a rounded key with hexagonal bit or a cordless driver-drill with an appropriate drill bit, a Ø 8mm through hole in the furniture

bottom, allows you to connect the bottom to the side first and then, by lowering the hexagonal bit of the key, to adjust the height of the construction without interfering with the side connection.

The zinc alloy die-cast foot, is provided with an independent engineering plastic glide in order to make the adjustment easier and to prevent the scratching of the floor too.

Capable of supporting a 175kg load each.

25mm adjustment

Zinc alloy, Steel and Engineering plastic

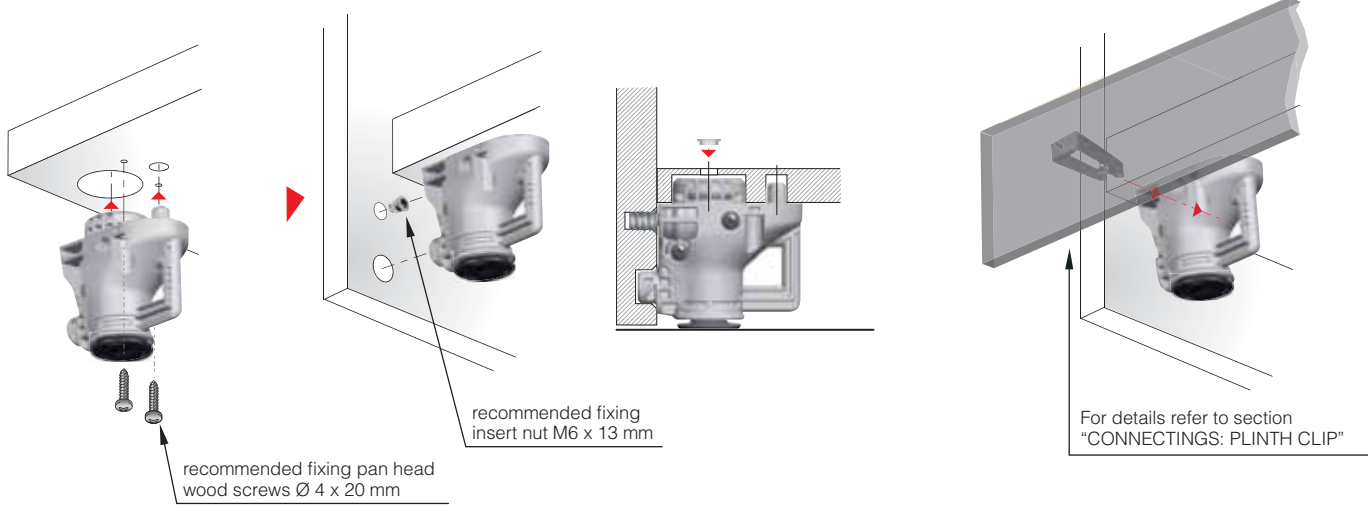


interzum award:  
intelligent  
material & design  
2009

175 Kg per piece

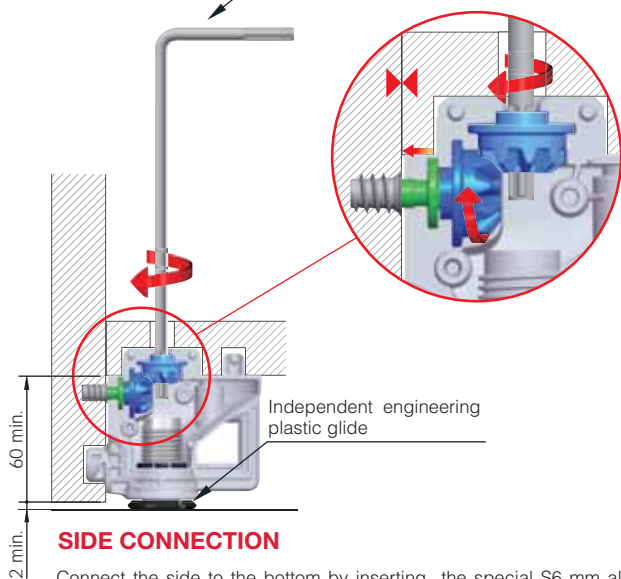


Tested in accordance with CATAS procedures



### STEP 1

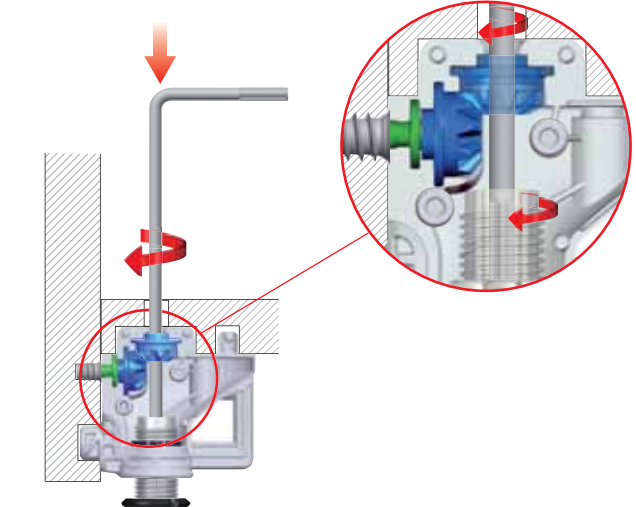
Special S6 mm allen wrench



### SIDE CONNECTION

Connect the side to the bottom by inserting the special S6 mm allen wrench with hexagonal bit into the through hole, until it fits into the first cavity.

### STEP 2

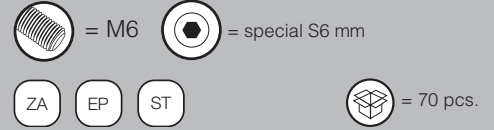
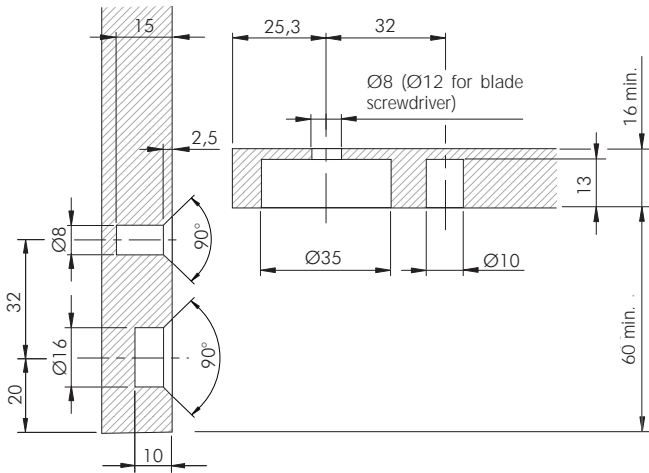


### ADJUSTMENT 0 - 25 mm

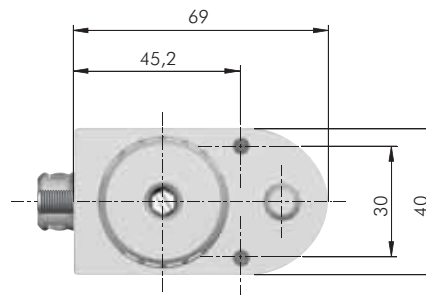
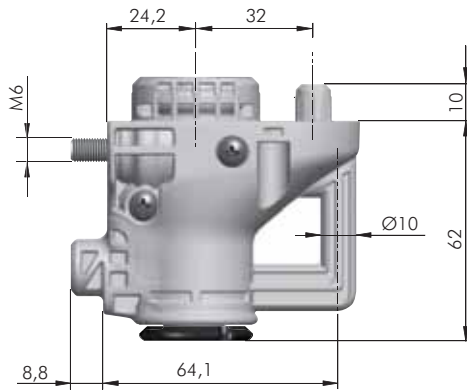
Adjust the height of the construction by lowering the hexagonal bit until it fits the cavity of the die-cast foot.



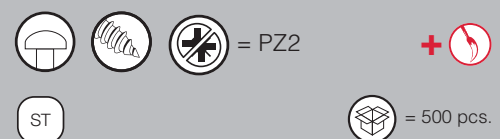
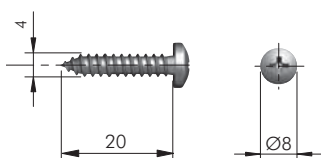
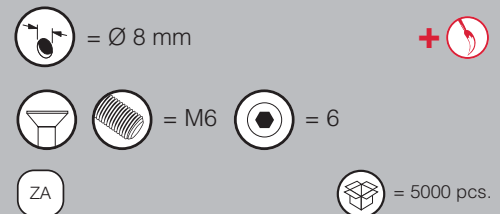
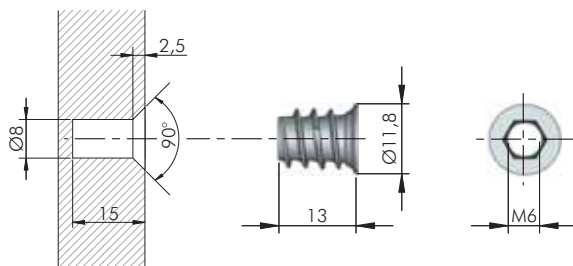
**ATACAMA J : APPLICATION FOR SIDE PANEL**



Special allen wrench is required part.no 31702000ZN.

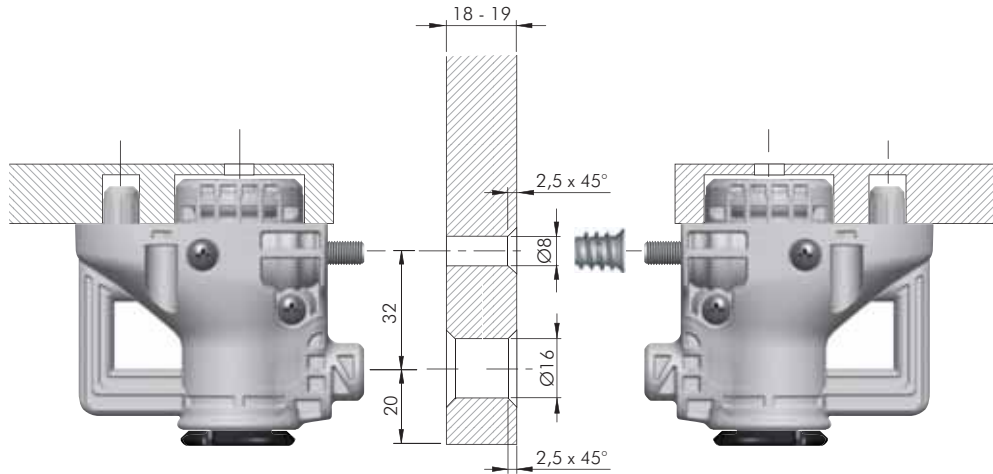


**ATACAMA J FIXING ACCESSORIES FOR SIDE PANEL**

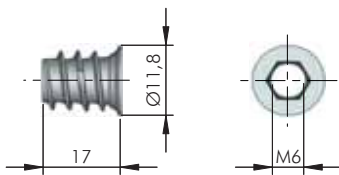




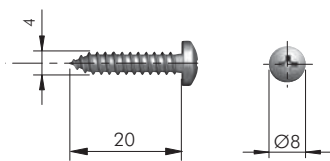
## ATACAMA J: APPLICATION FOR PARTITION 18 - 19 mm THICK



## ATACAMA J FIXING ACCESSORIES FOR PARTITION 18 - 19 mm THICK



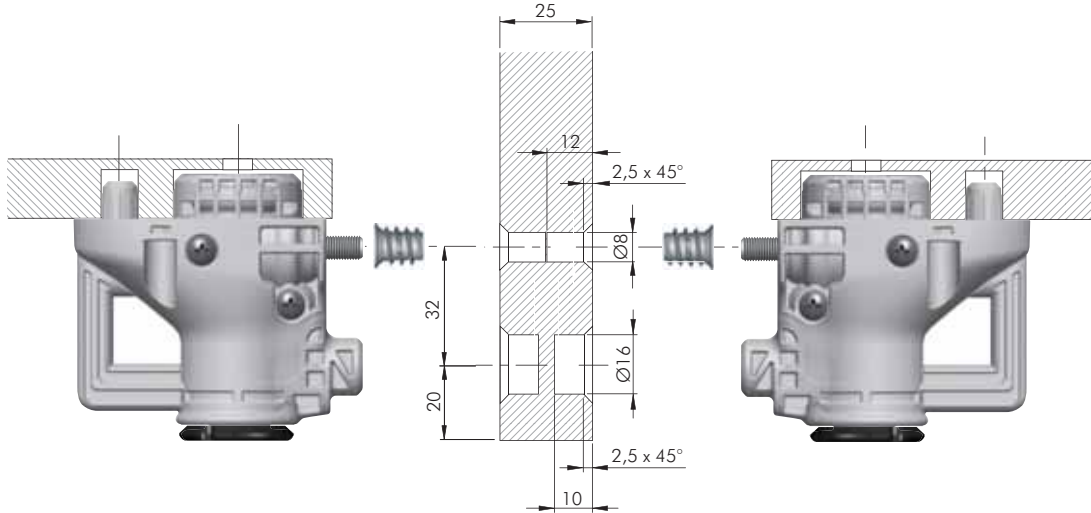
	= Ø 8 mm	
	= M6	
		= 5000 pcs.
	20102040GR	



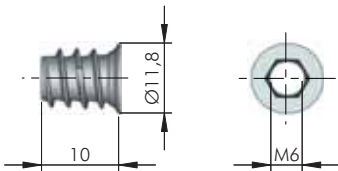
	= PZ2	
		= 500 pcs.
	60103270ZN	



**ATACAMA J: APPLICATION FOR PARTITION 25 mm THICK**

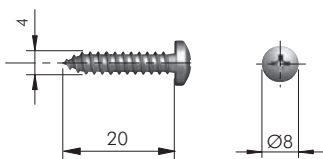


**ATACAMA J FIXING ACCESSORIES FOR PARTITION 25 mm THICK**



= Ø 8 mm +   
 = M6 = 6  
 = 5000 pcs.

1 2 3   
 20102010GR

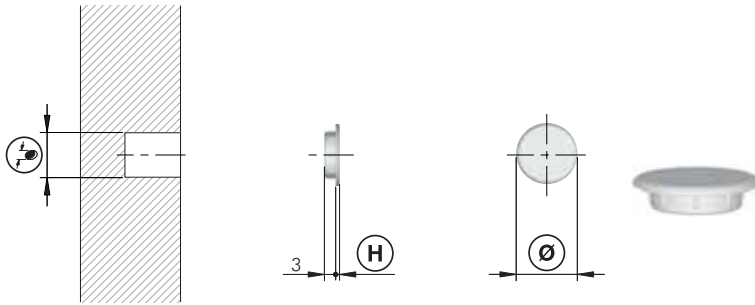


= PZ2 +   
 = 500 pcs.

1 2 3   
 60103270ZN



## ATACAMA J ACCESSORIES



= Ø 8, Ø 12 mm



EP



23002010AB



Ø 8



Ø 11



1



5000

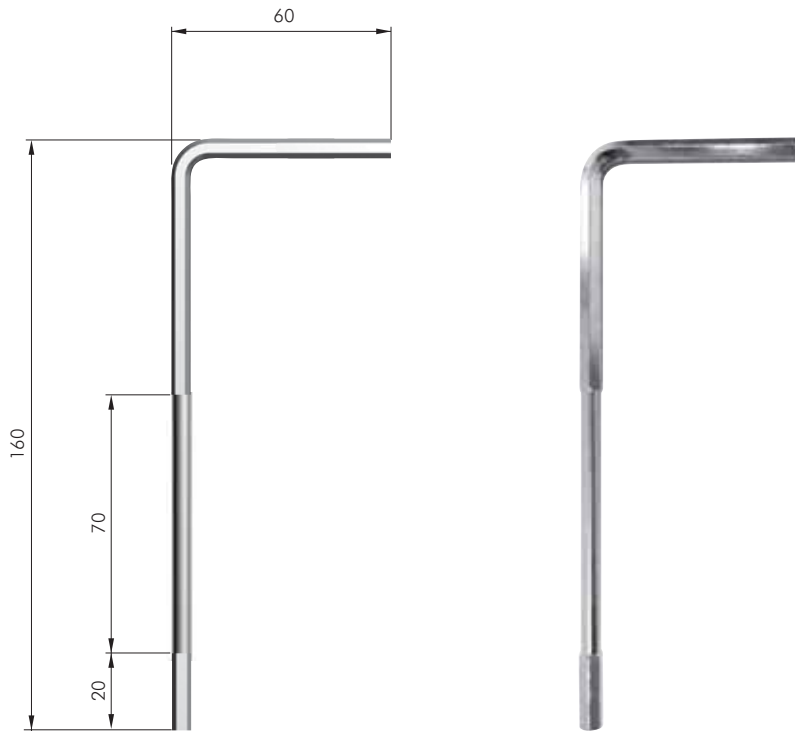
23002030AB

Ø 12

Ø 15

1

5000



= special S6 mm

ST

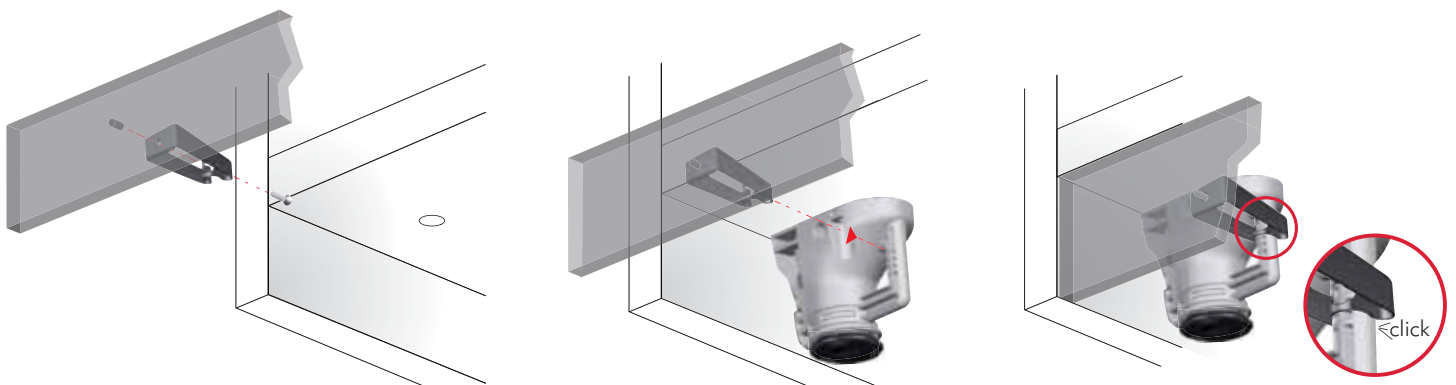
= on request



31702000ZN

## PLINTH CLIP FOR ATACAMA J

- For details refer to section "CONNECTINGS: PLINTH CLIP"

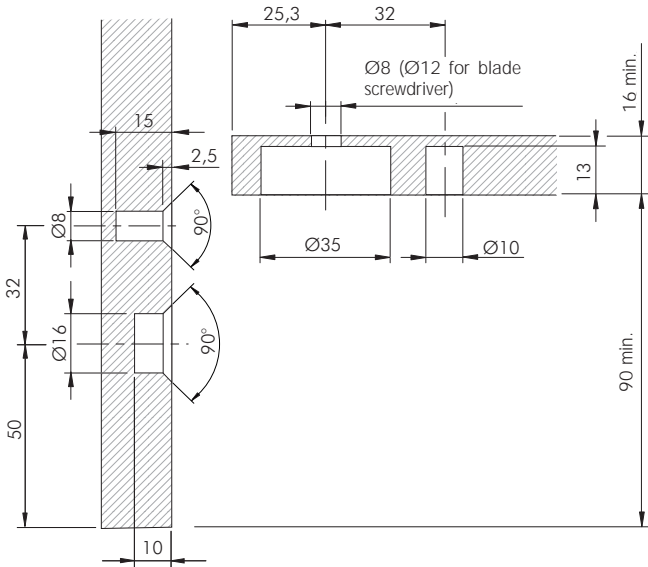






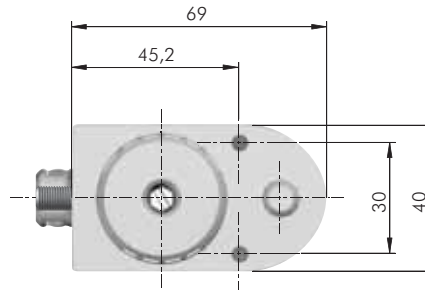
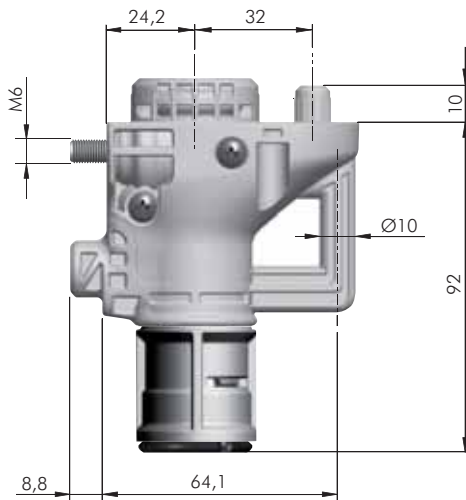
**OPTIONAL VERSION**

**ATACAMA J WITH HEIGHT ADAPTER**



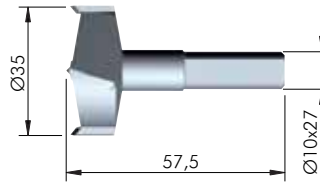
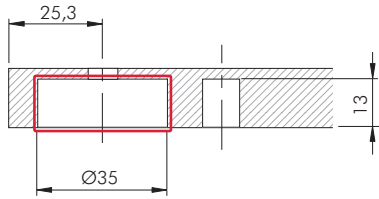
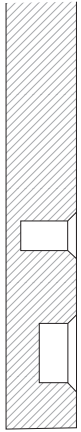
	= M6		= special S6 mm
	ZA		EP
	ST		= 50 pcs.
	31703000IJ		

Special allen wrench is required part.no 31702000ZN.

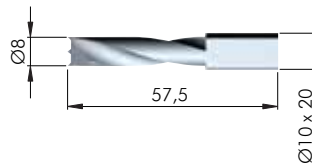
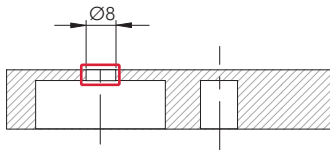
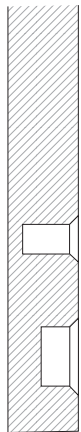




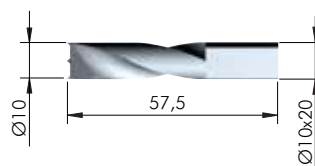
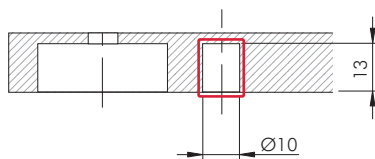
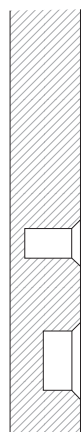
## DRILL BIT FOR ATACAMA J



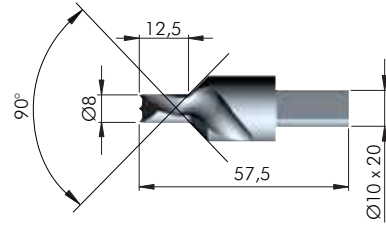
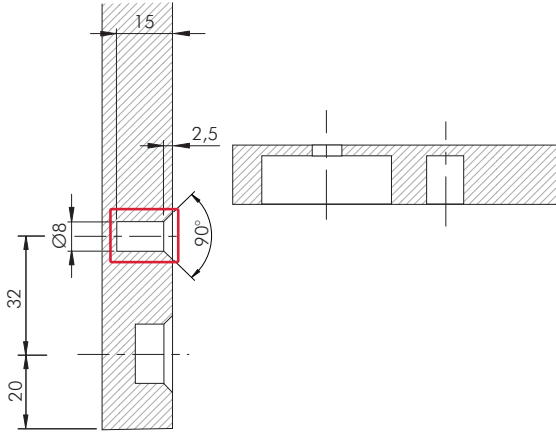
HSS	= on request
123	
3175201000	



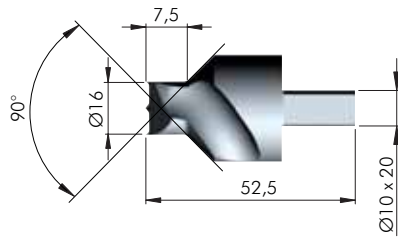
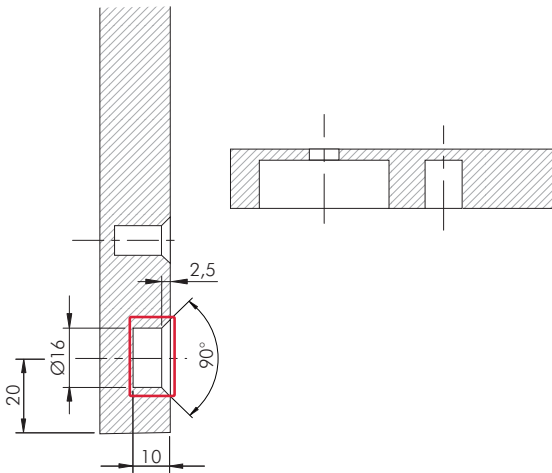
HSS	= on request
123	
1145202000	



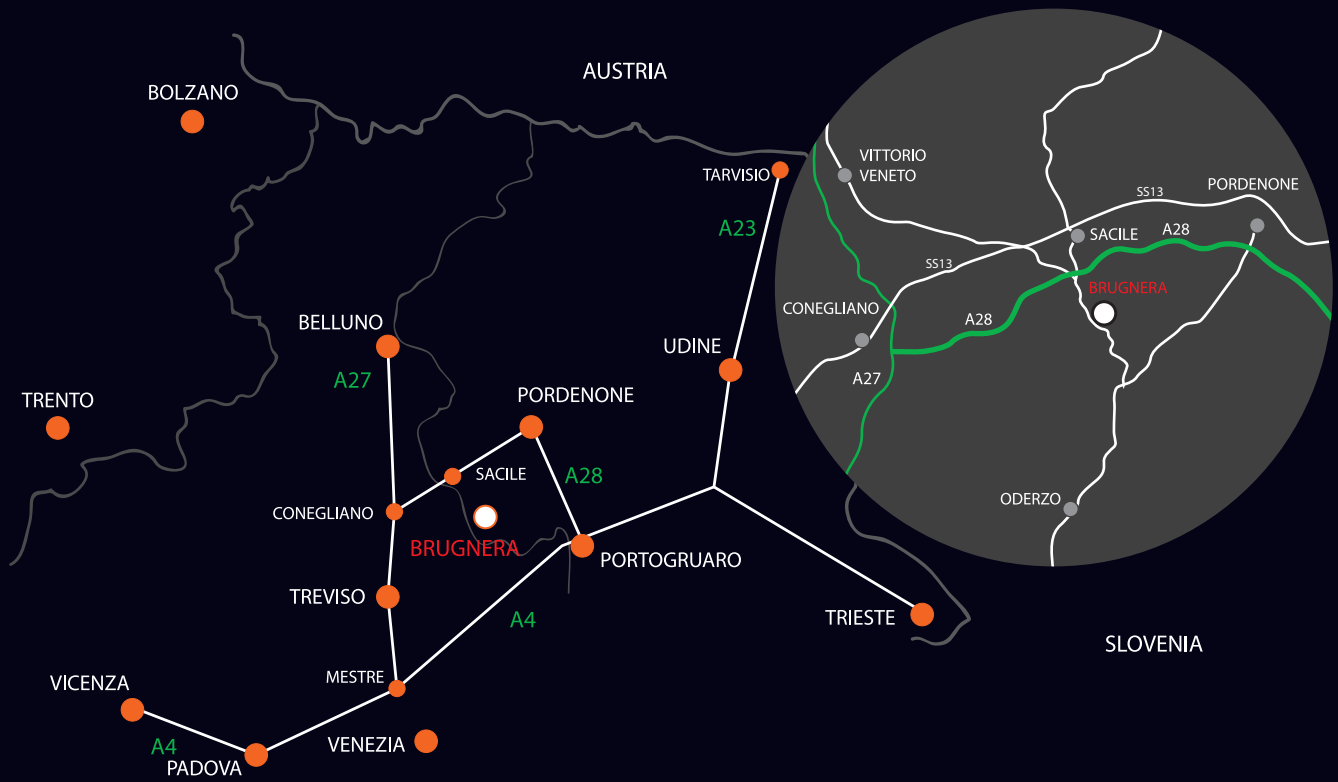
HSS	= on request
123	
3175204000	



HSS	= on request
123	
3175205000	



HSS	= on request
123	
3175202000	



[www.italianaferramenta.com](http://www.italianaferramenta.com)